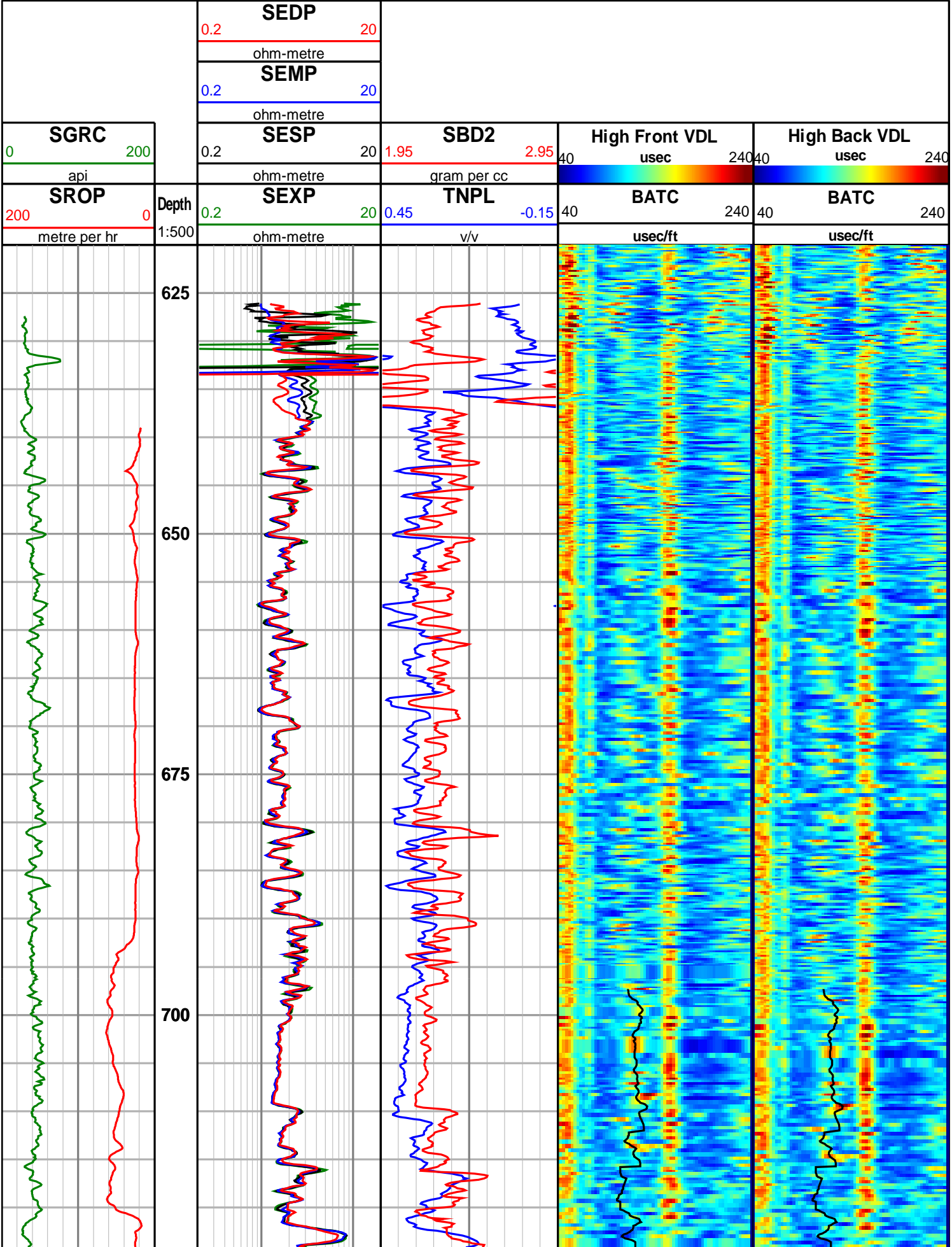
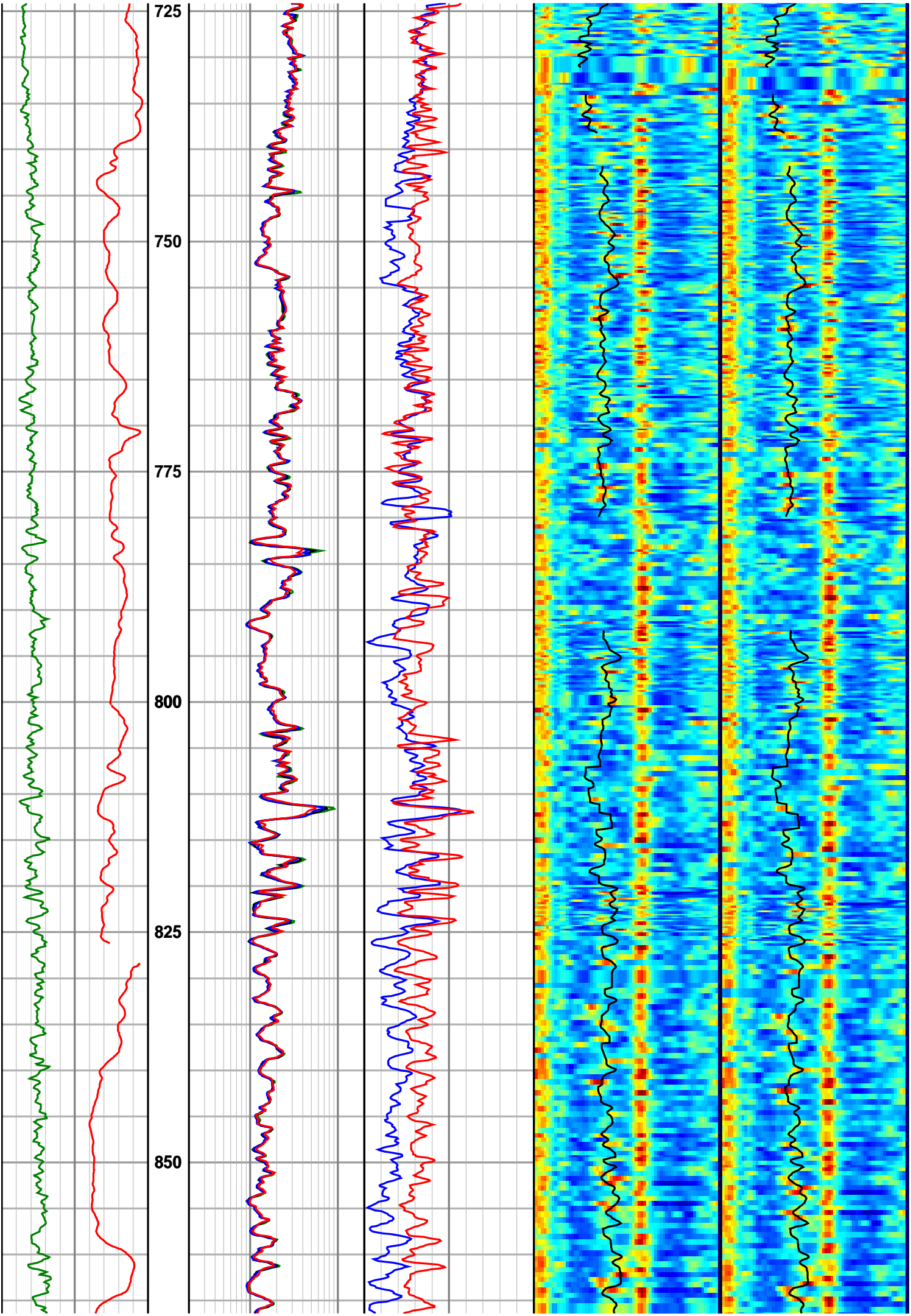
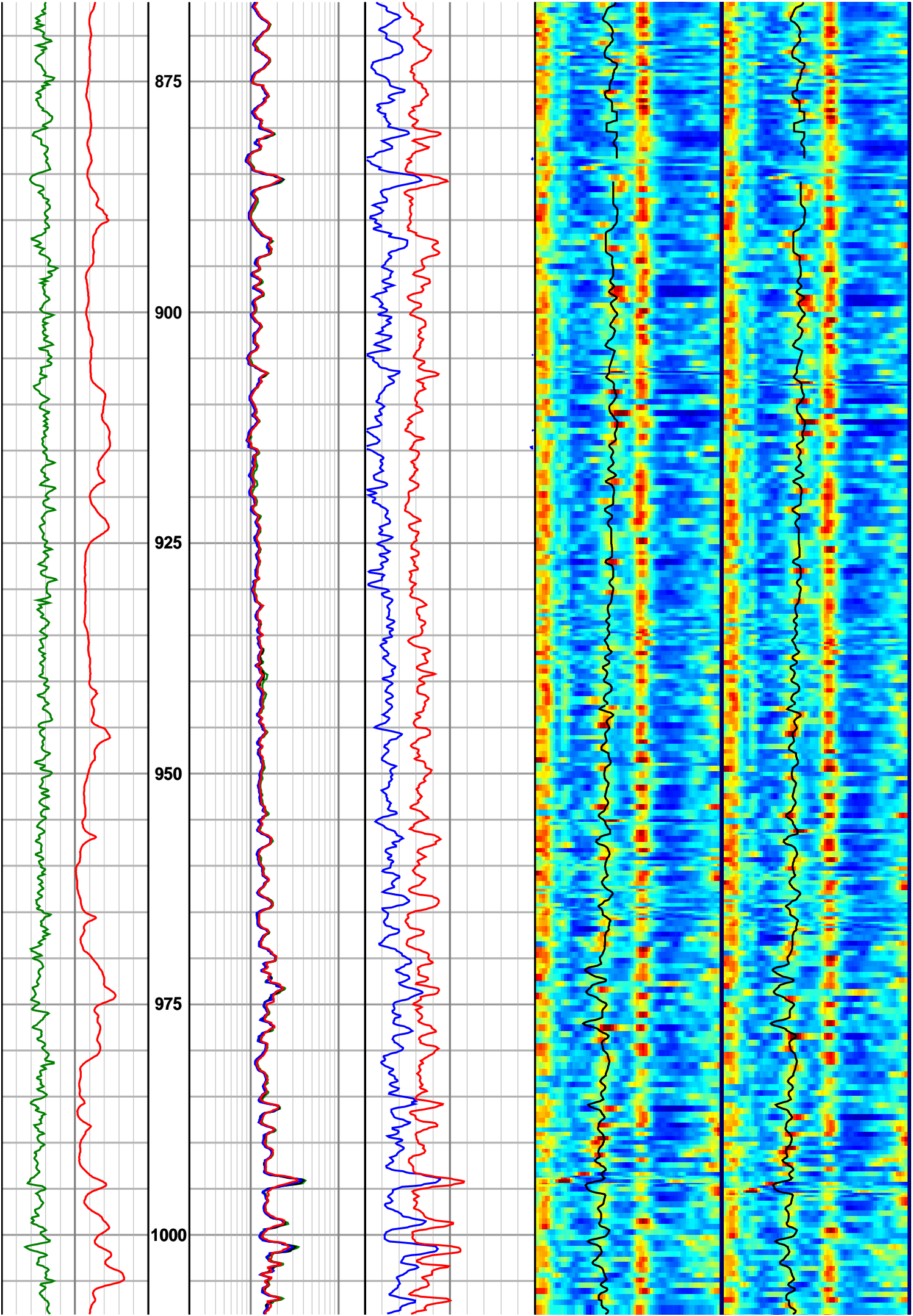
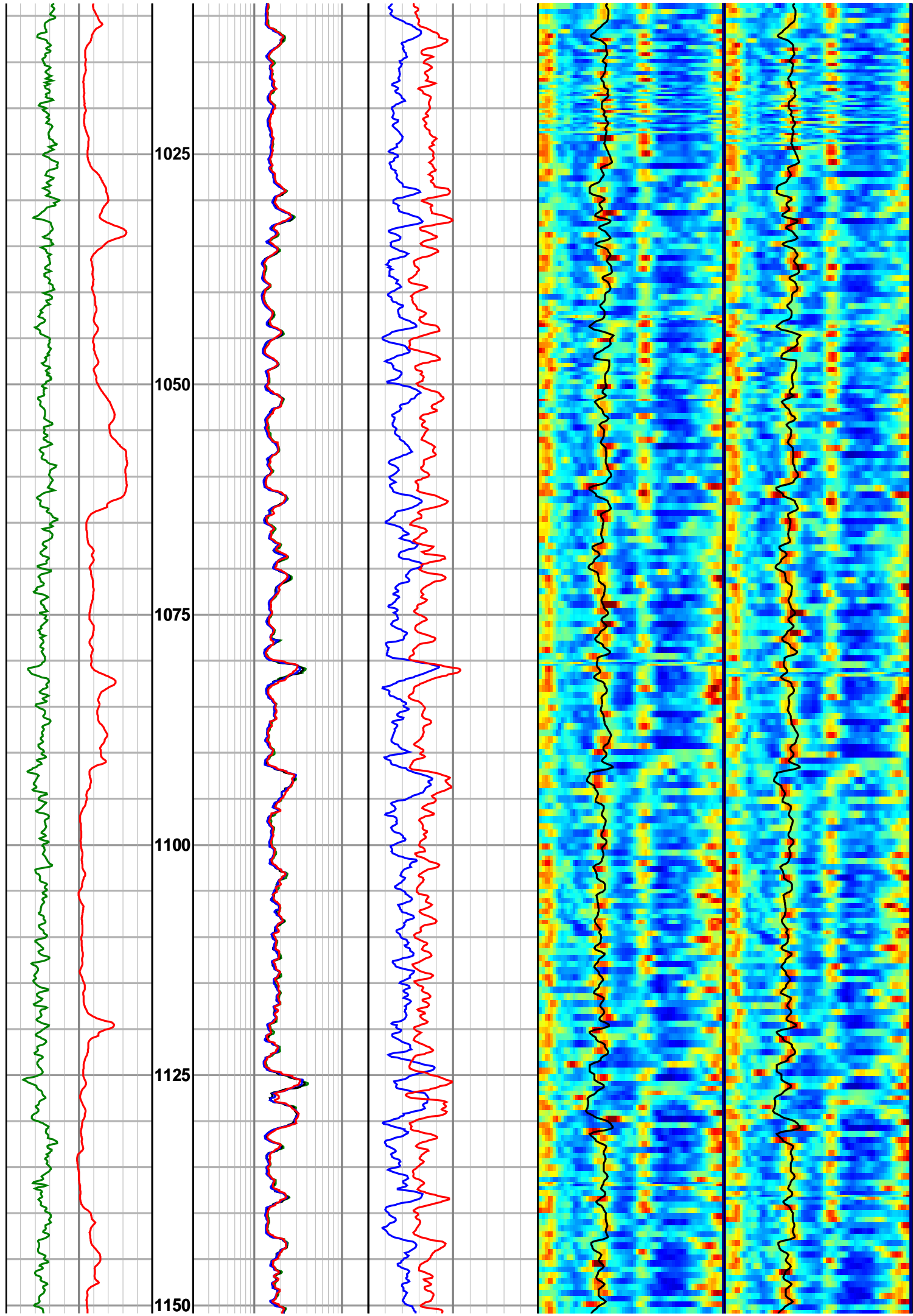


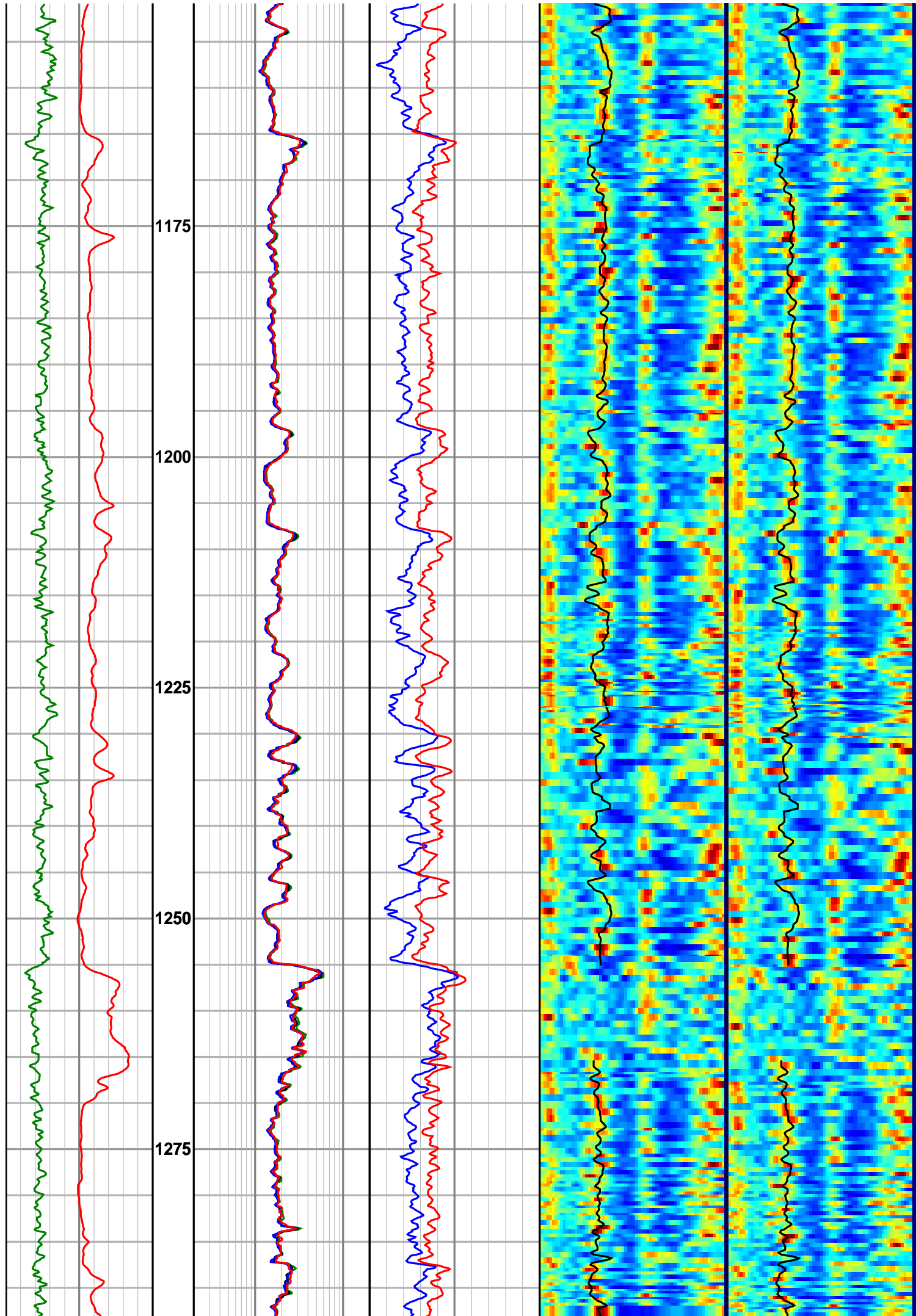
Thylacine South-1 BAT QC

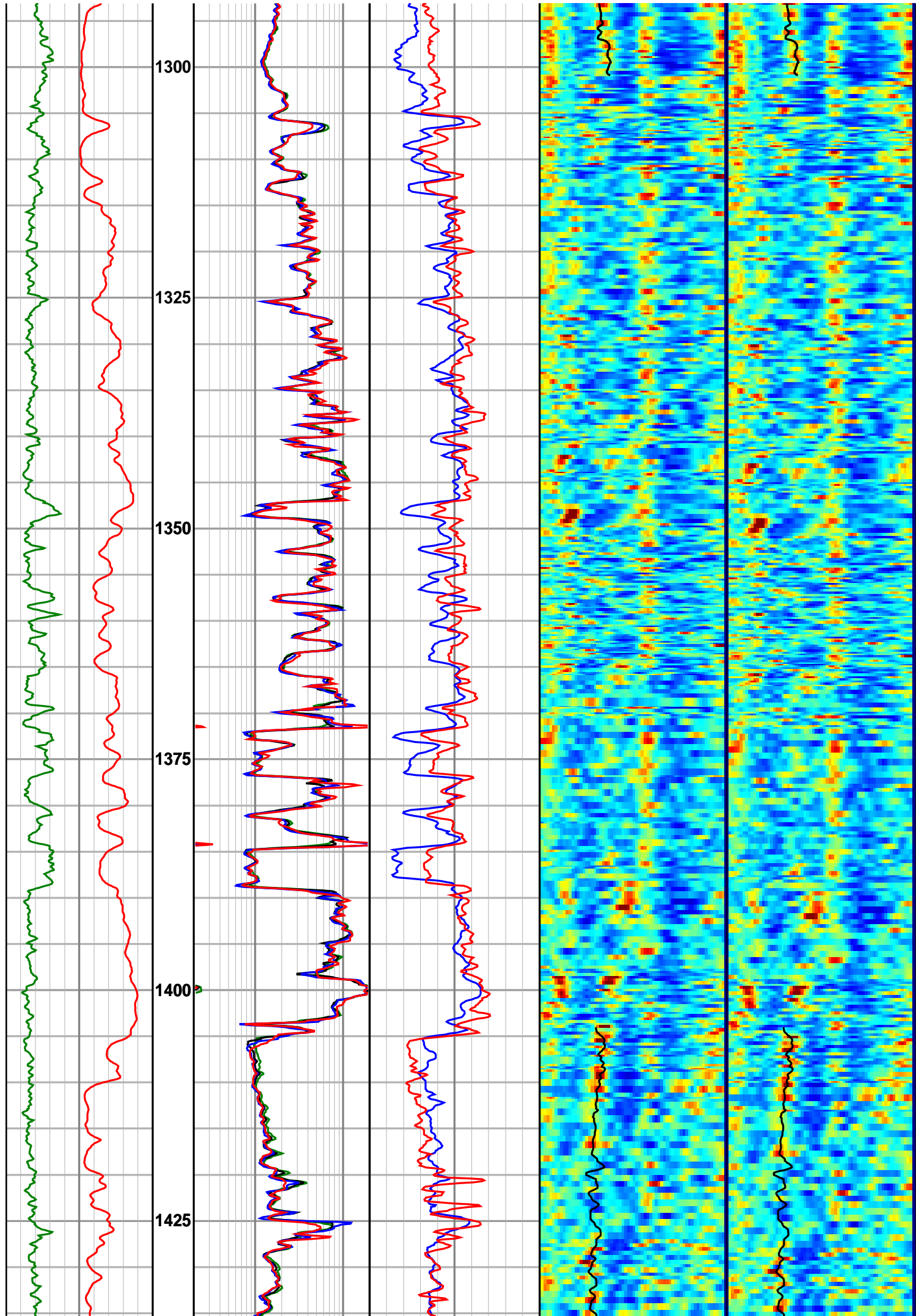


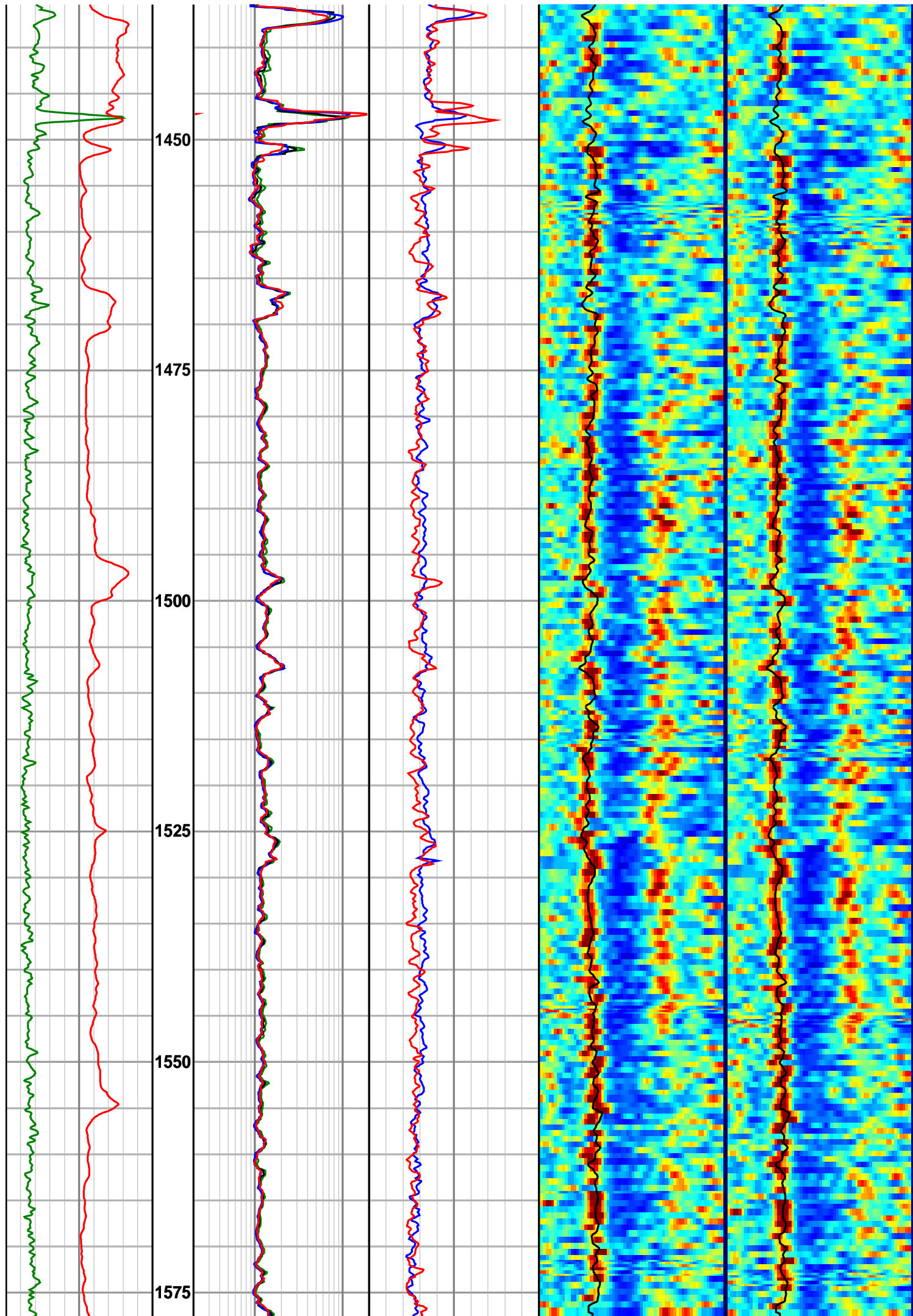


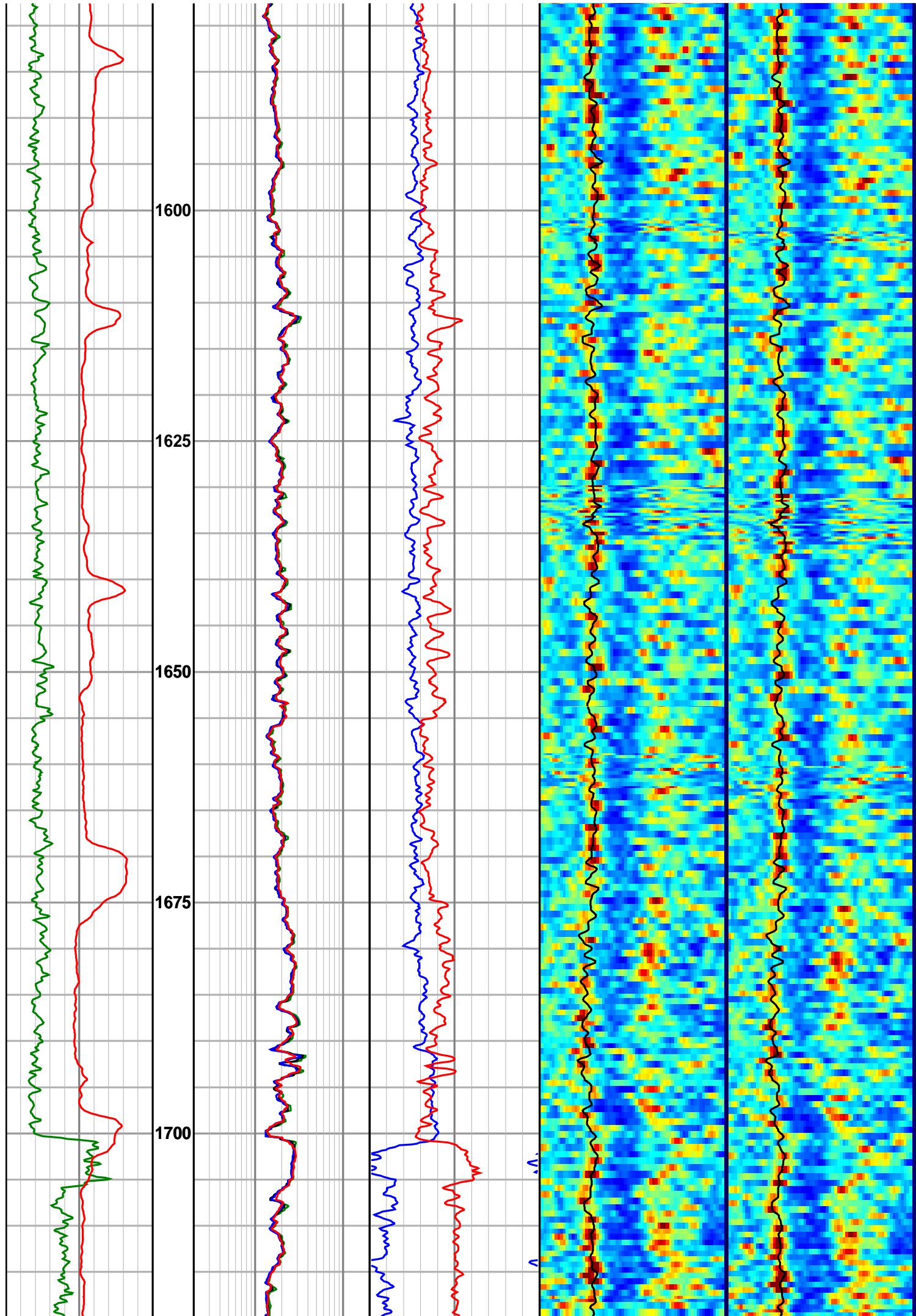


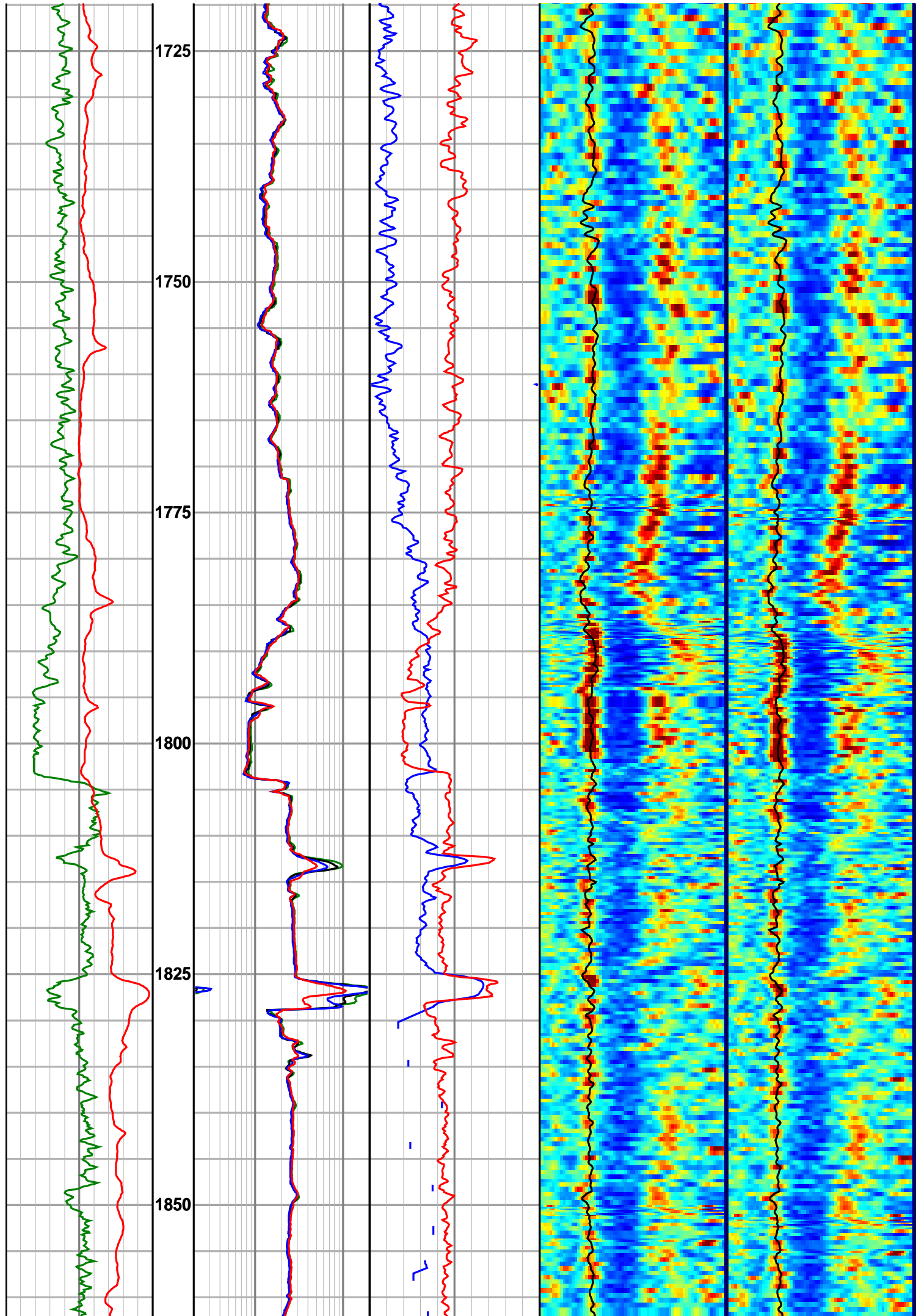


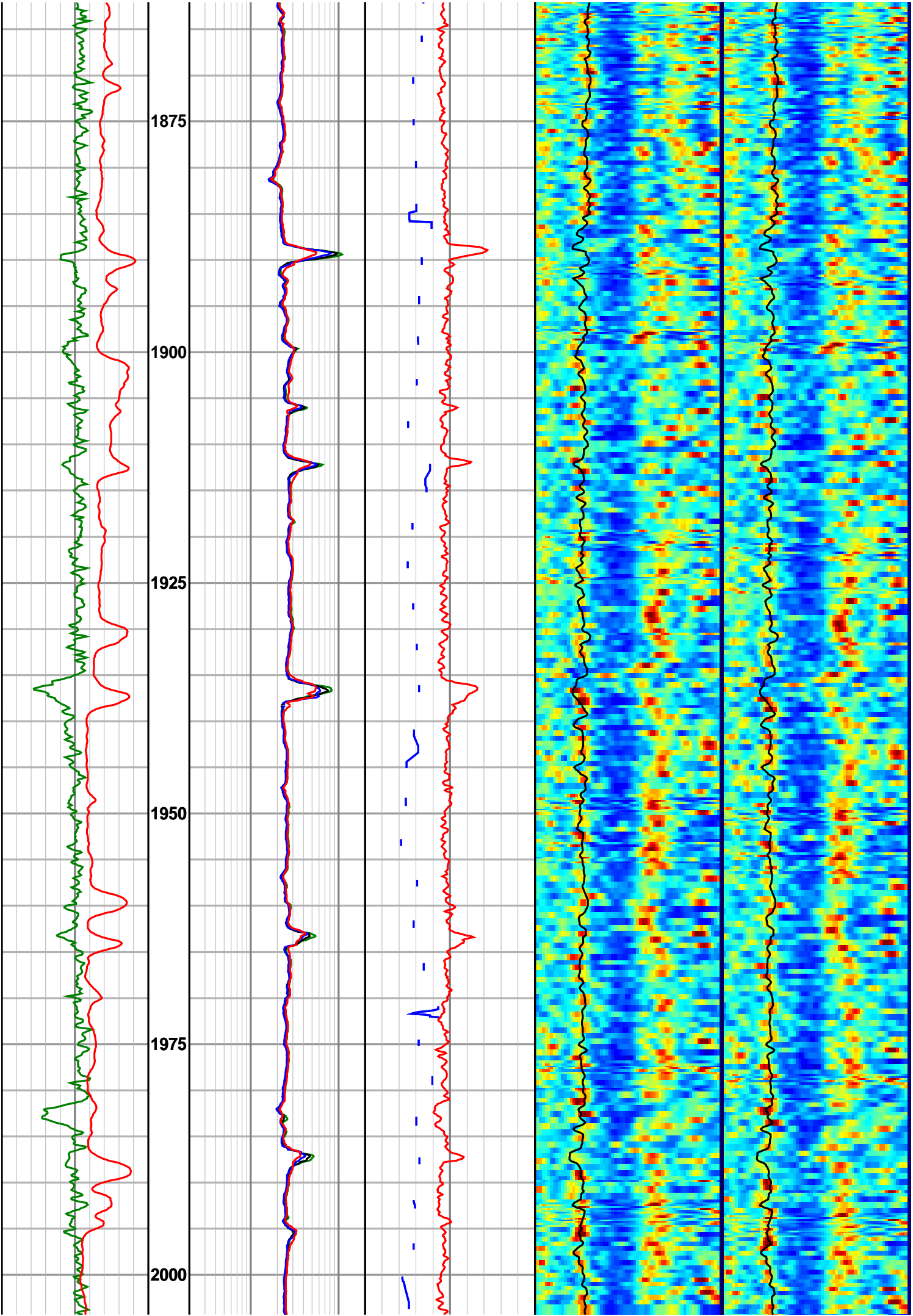


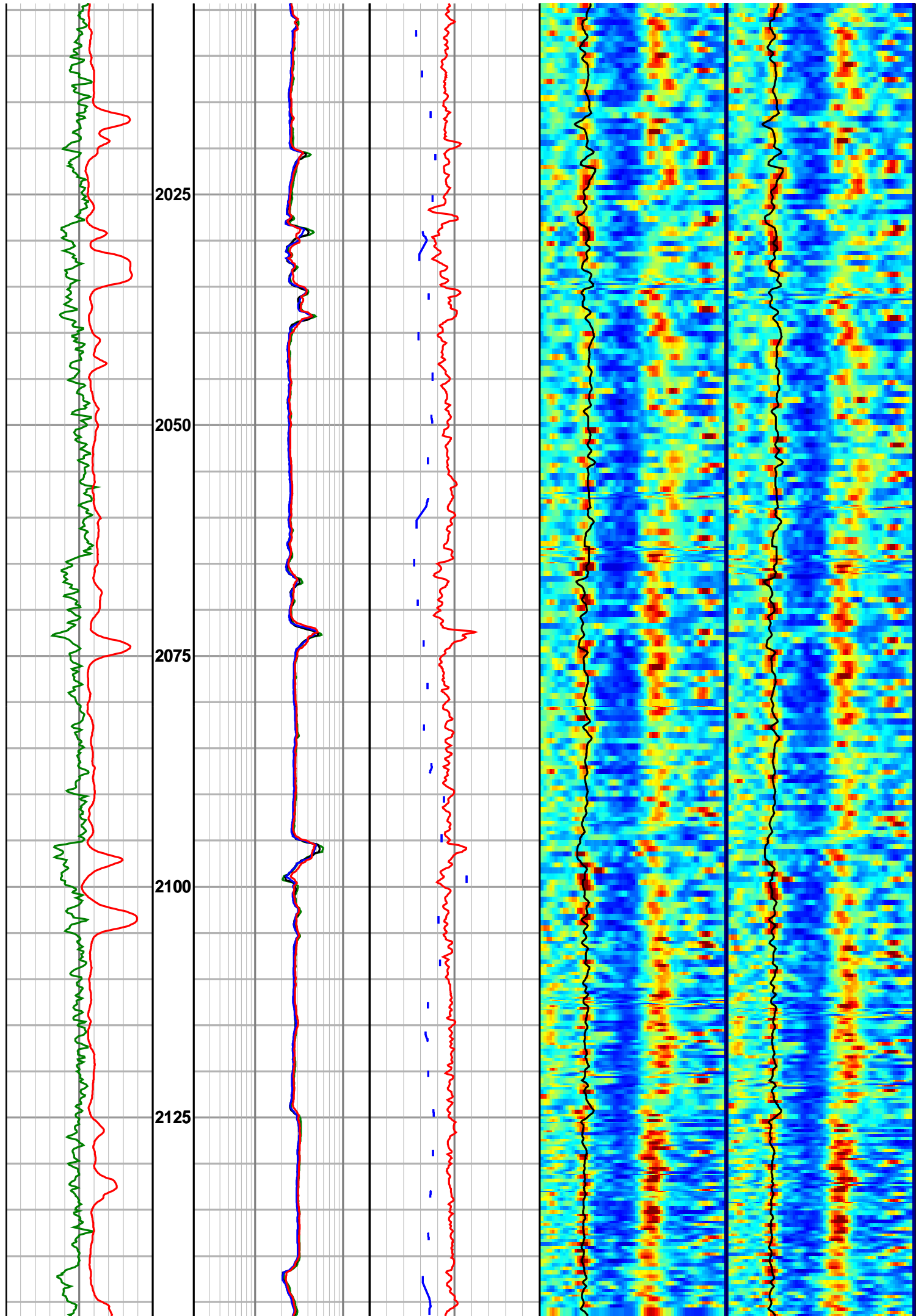


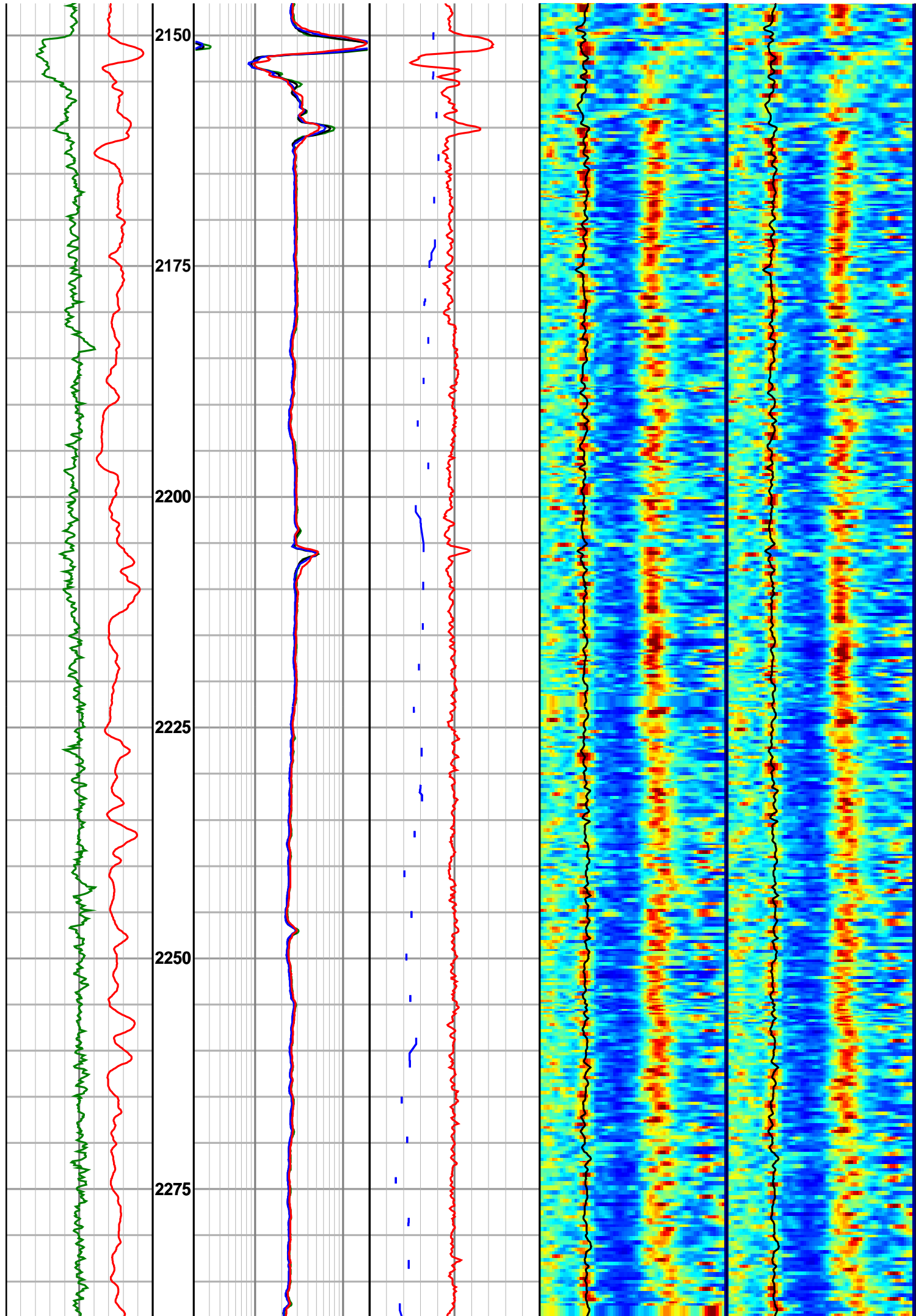


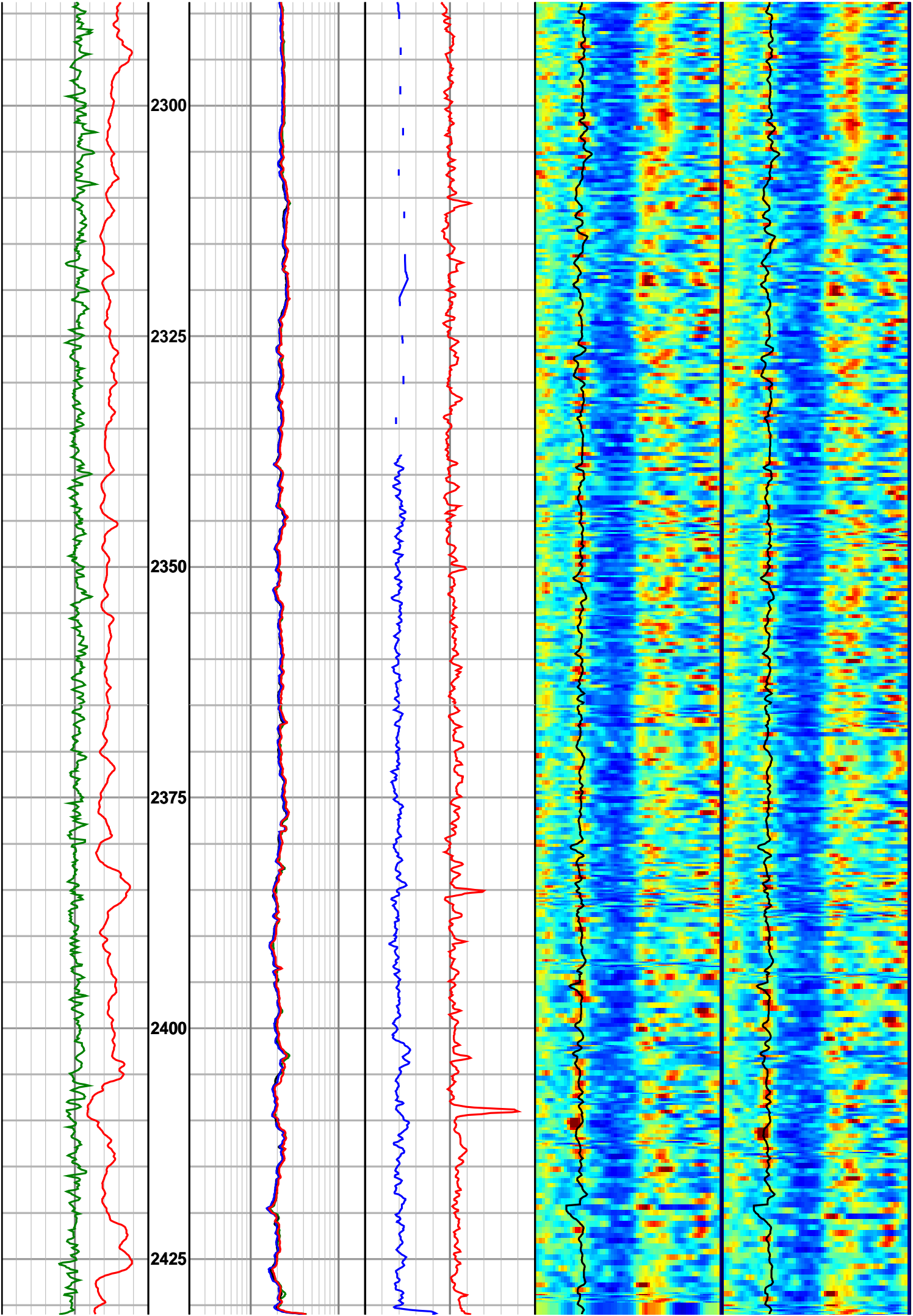


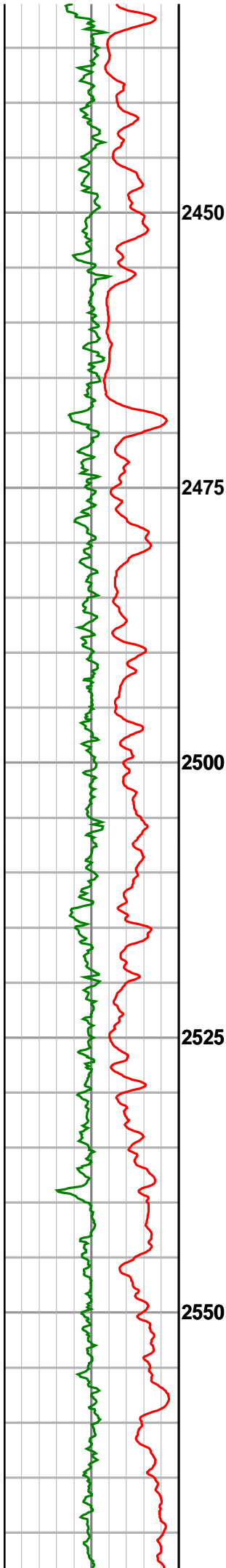
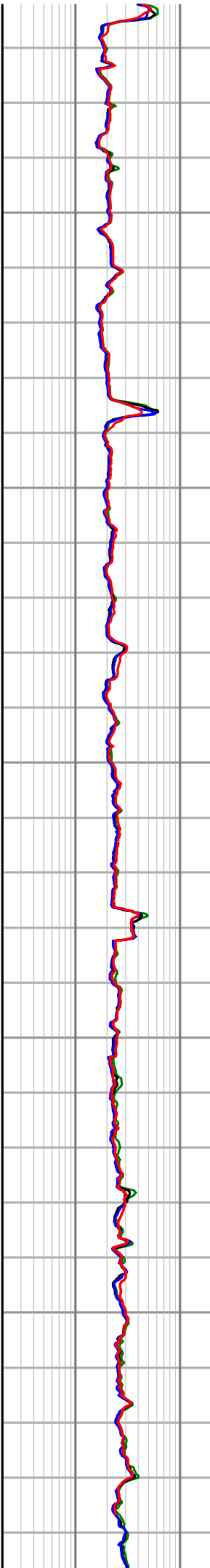
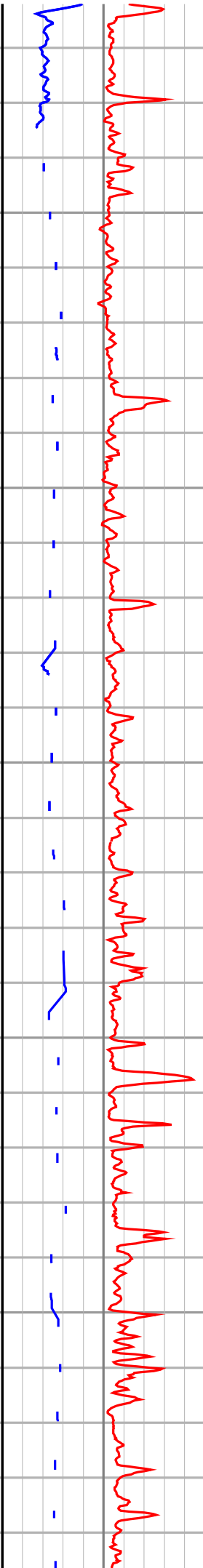
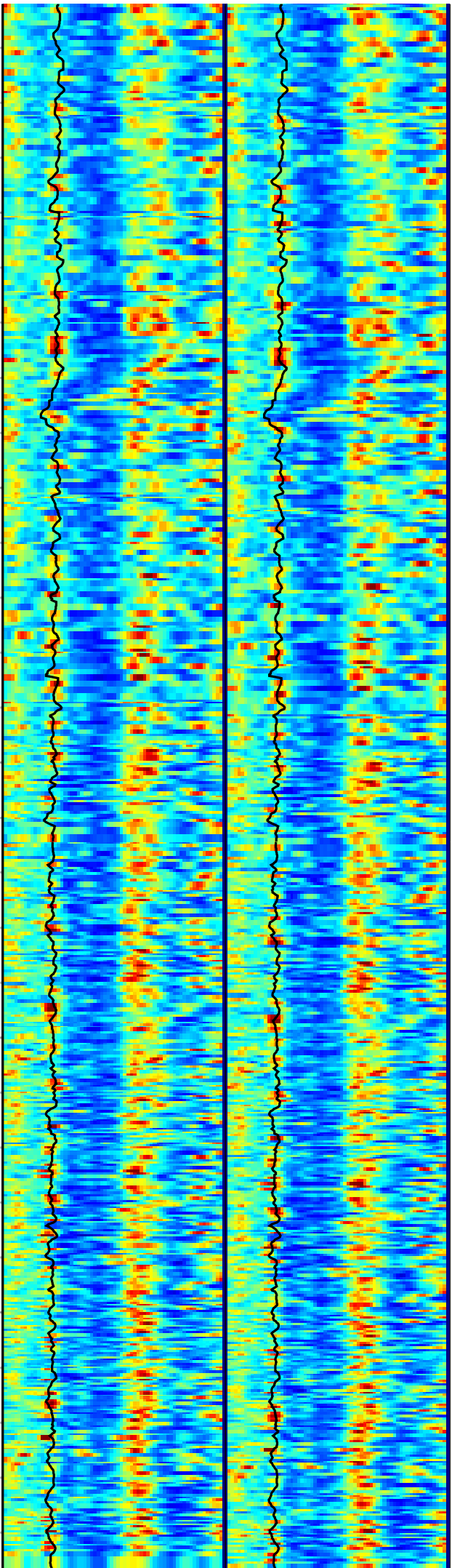


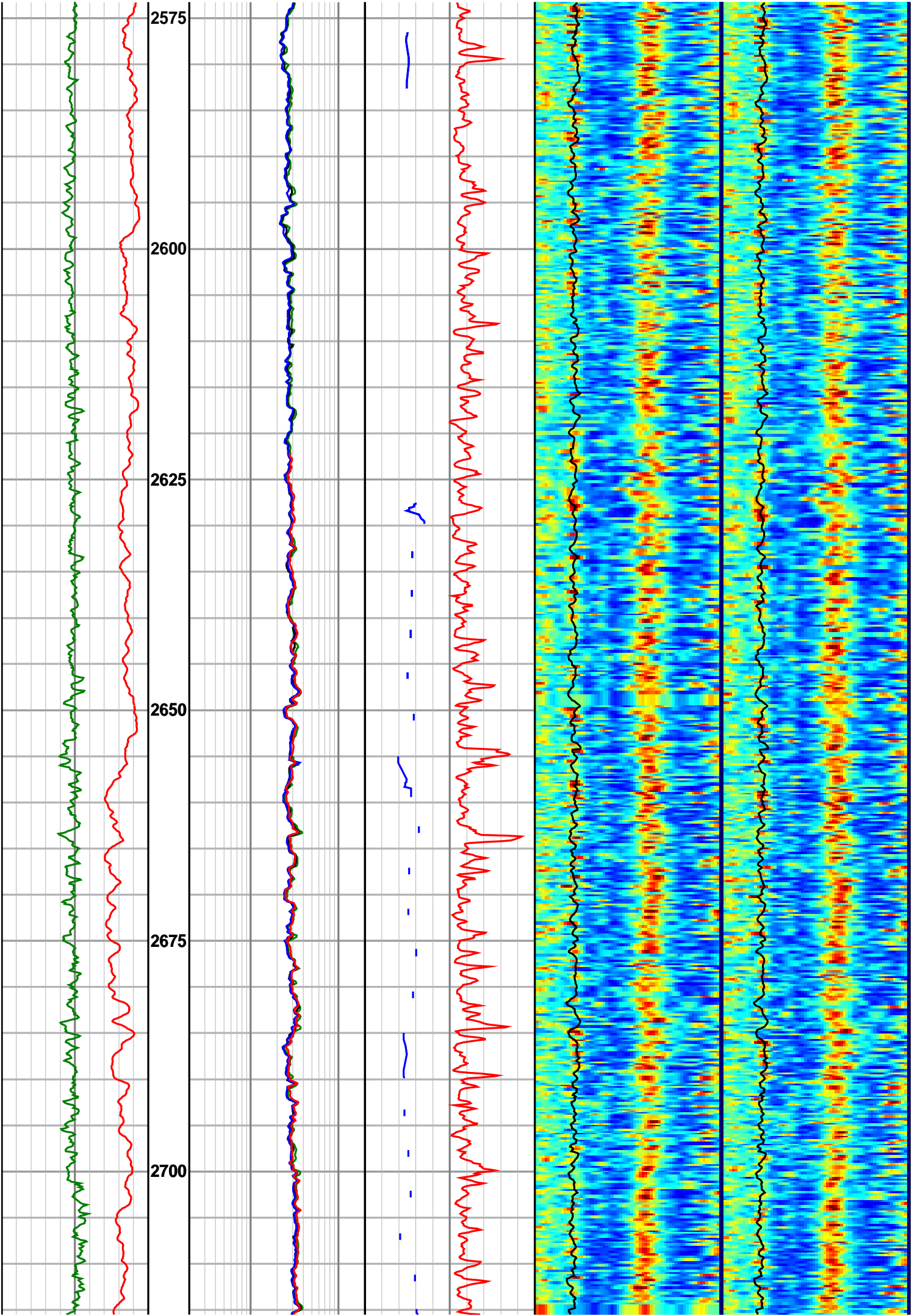


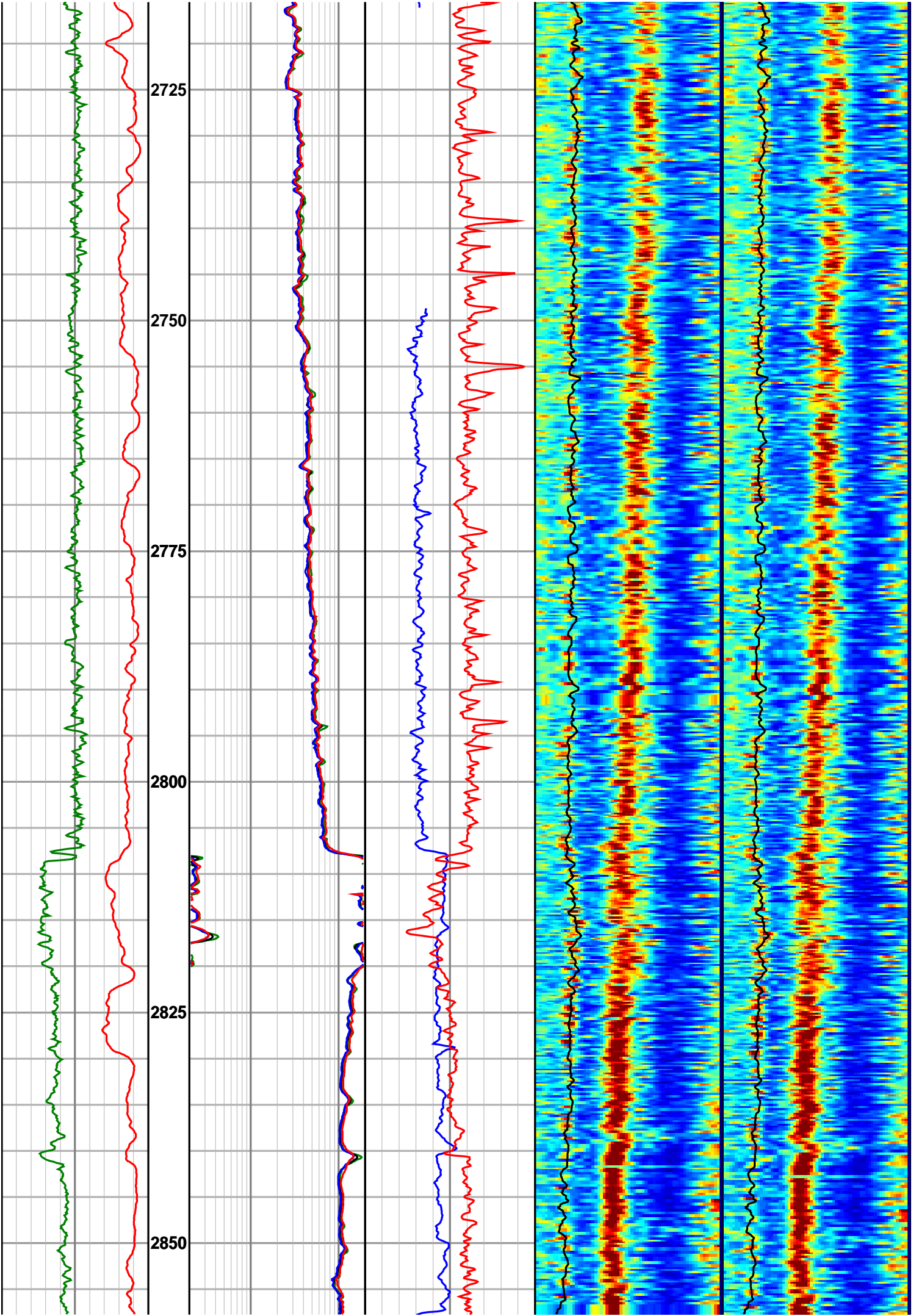


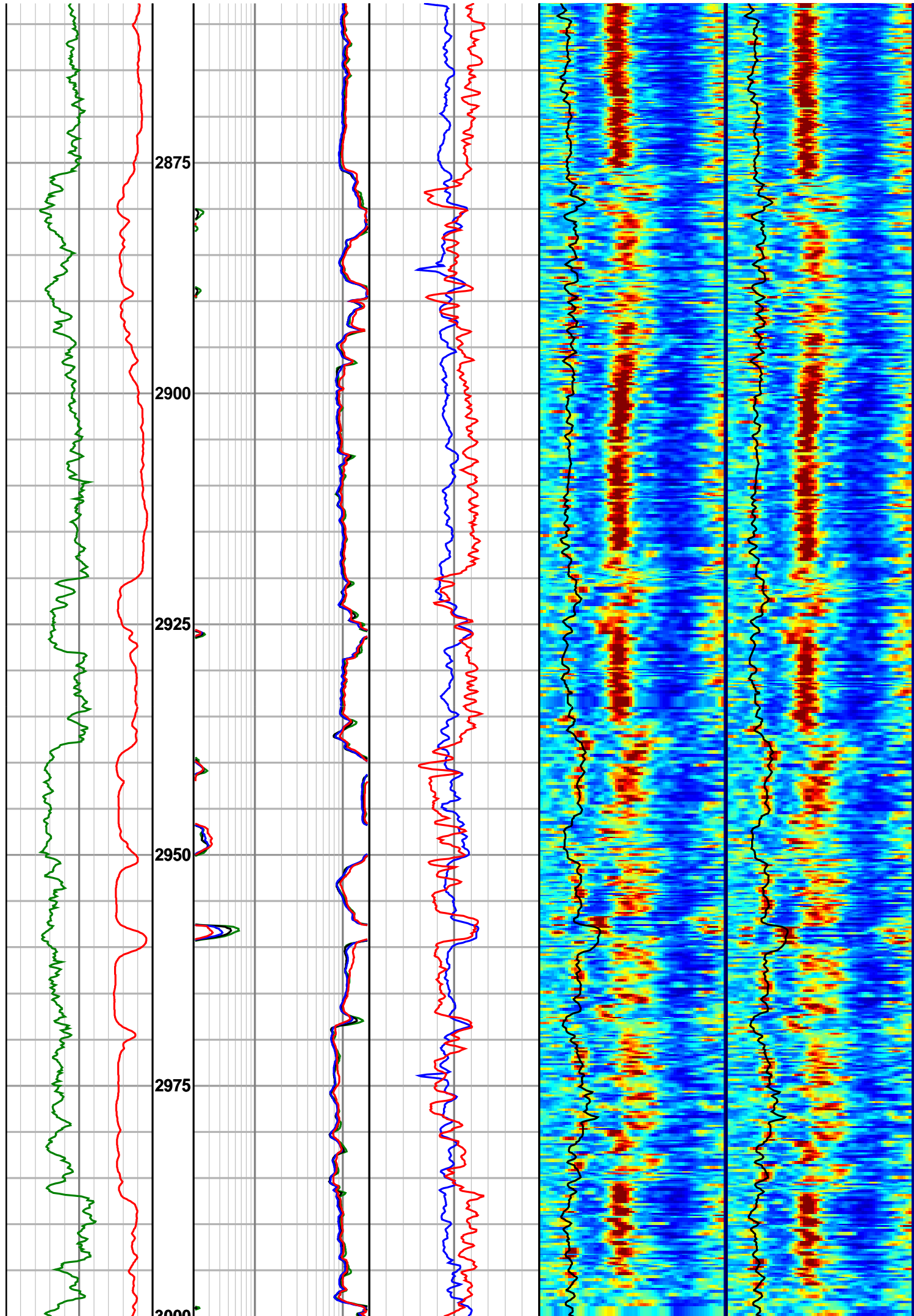


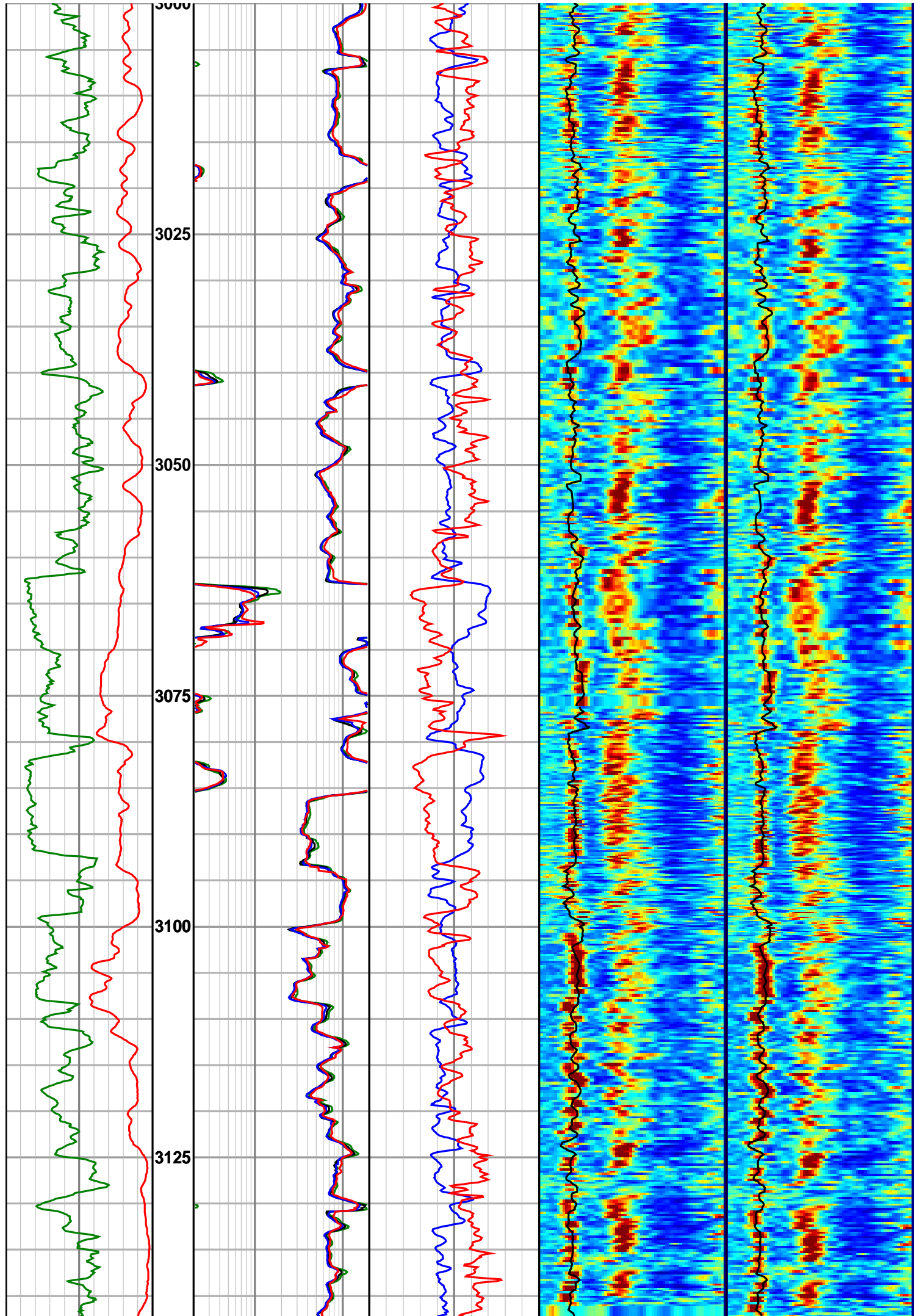


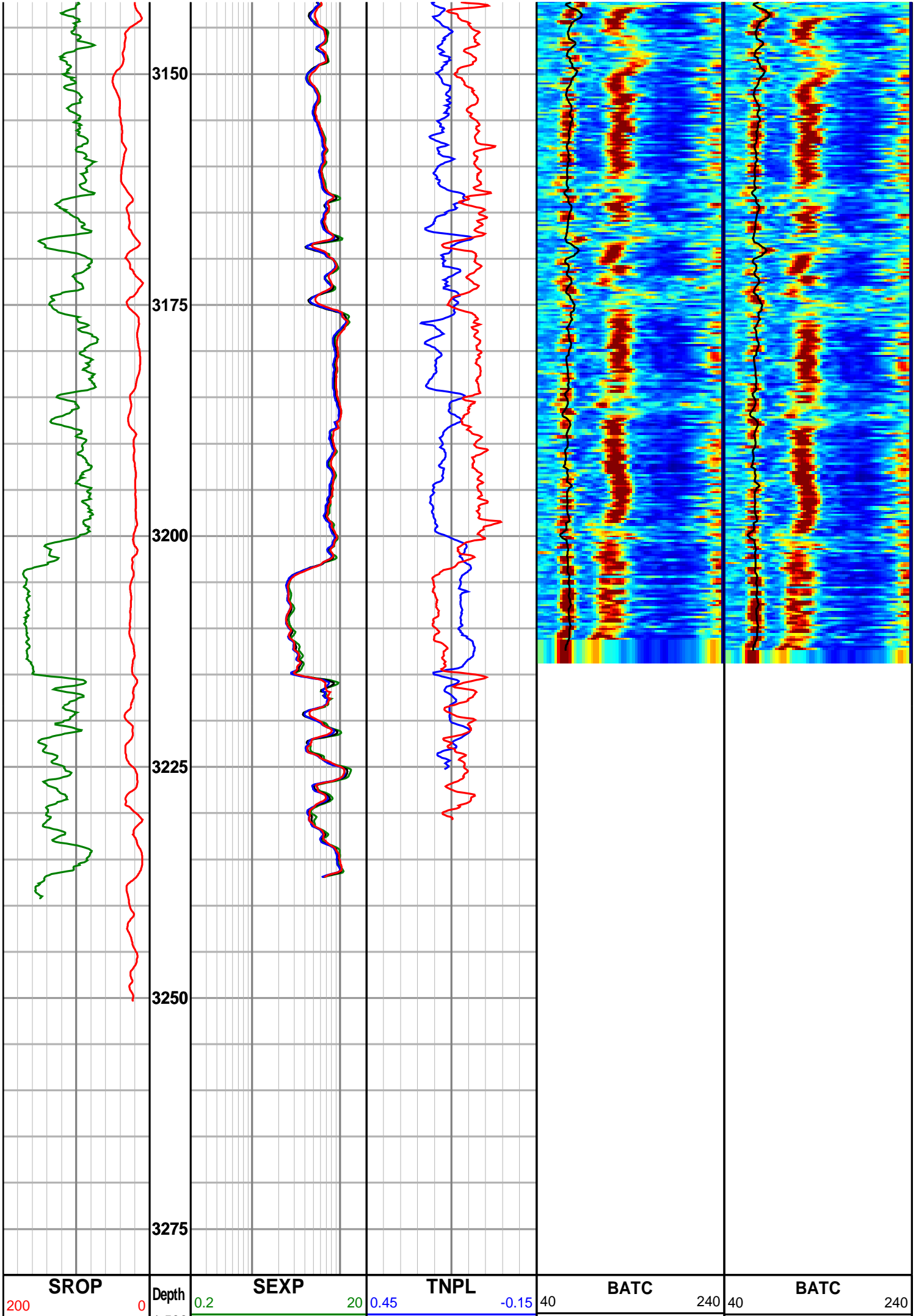












metre per hr	1:500	ohm-metre	v/v	usec/ft	usec/ft
SGRC		SESP	SBD2	High Front VDL	High Back VDL
0200		0.220	1.952.95	40240	40240
api		ohm-metre	gram per cc	usec	usec
		SEMP			
		0.220			
		ohm-metre			
		SEDP			
		0.220			
		ohm-metre			